

1 2 3 4 5 6 7 8

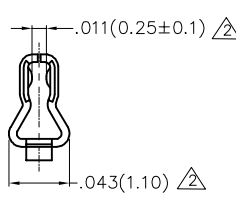
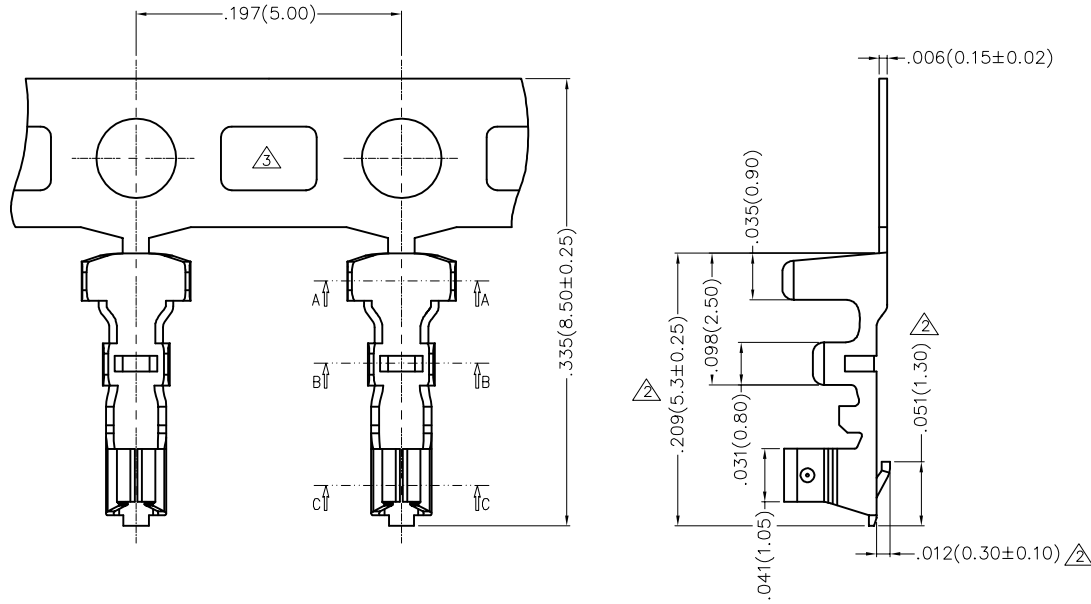
REV	LOCATIONS	DESCRIPTION	DATE	REVISER	APPD
2	△	Update dimensions	17/OCT/23	MATT	LEO
3	△	Update the structure of the strip	10/JAN/24	MATT	LEO

SPECIFICATIONS

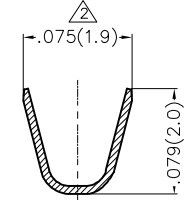
Electrical

Current Rating: 2.5A AC(rms)/DC
 Voltage Rating: 250V AC(rms)/DC
 Contact Resistance: 20 mΩ Max
 Insulation Resistance: 1000 MΩ Min
 Withstanding Voltage: 500V AC r.m.s
 Temperature Range—Operating: -25°C~+85°C

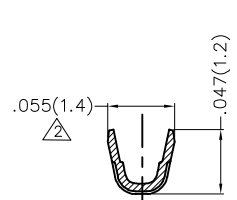
Material: Phosphor Bronze
 Plating: Tin plated/Gold plated
 Wire Range: 24AWG~30AWG
 Insulation Nom.Dia: $\phi.043(\phi1.10\text{mm})$ Max
 Applicable Housing: FHG15003 Series
 Minimum Order Quantity : 10,000 PCS



SECTION C-C



SECTION A-A



SECTION B-B

Ordering Information

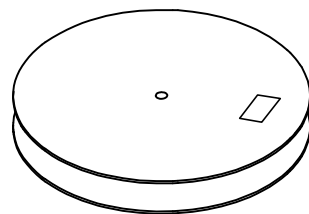
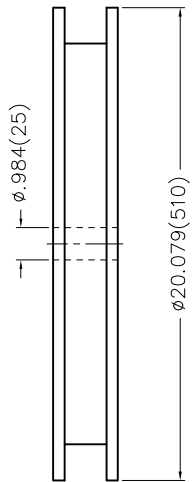
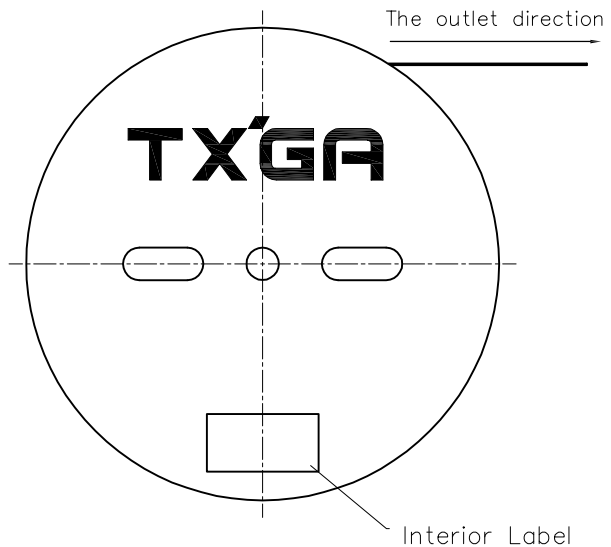
FT 150 03 — F X H
 1 2 3 4 5 6

1	Category FT—Terminal	2	Series Number 150—Pitch1.50mm	3	Distinction No. 03	4	Type F—Female	5	Plating 1—Gold Plated 2—Tin Plated	6	Packaging H—Paper Axis
---	-------------------------	---	----------------------------------	---	-----------------------	---	------------------	---	--	---	---------------------------

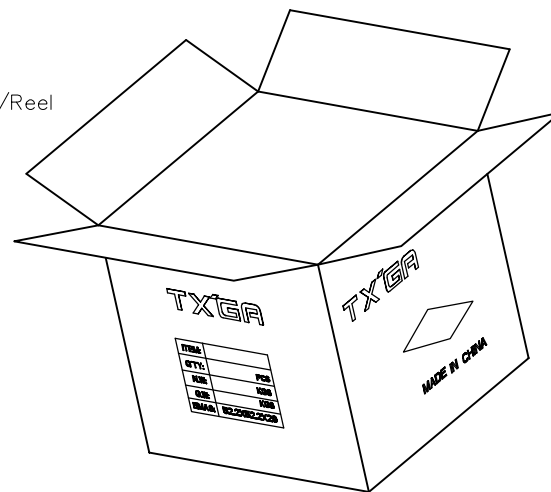
<p>THIRD ANGLE PROJECTION</p>	GENERAL TOLERANCES (UNLESS SPECIFIED)		APPROVE BY FRANK	DATE 19/JUN/17	PART NO. FT15003-FXH	ITEM NO. FT15003	<p>Building Technology Cornerstone</p>	
	X.±.012(0.30)	X:±5'	CHECKED BY JACOB	DATE 19/JUN/17	TITLE Wire to Board Pitch 1.50mm(Terminal)			REV 3
	DESIGN UNITS Inch (metric)	X.X±.008(0.20)	.X'±2'	DRAWN BY LXF	DATE 19/JUN/17	THIS DRAWING CONTAINS INFORMATION THAT IS PROPRIETARY TO TXGA INDUSTRIAL ELECTRONICS(S.Z)CO.,LTD AND SHOULD NOT BE USED WITHOUT WRITTEN PERMISSION		SHEET NO. 1/2
	SCALE 5:1	SIZE A4	X.XX±.006(0.15)					

1 2 3 4 5 6 7 8

REV	LOCATIONS	DESCRIPTION	DATE	REVISER	APPD



10,000 Pcs/Reel



 THIRD ANGLE PROJECTION	GENERAL TOLERANCES (UNLESS SPECIFIED)		APPROVE BY FRANK	DATE 19/MAY/17	PART NO. FT15003-FXH	ITEM NO. FT15003	 Building Technology Cornerstone	
	DESIGN UNITS Inch (metric)	X.±.012(0.30)	X.±5'	CHECKED BY CHERRY	DATE 19/MAY/17	TITLE Wire to Board Pitch 1.50mm(Terminal)		REV 3
SCALE 5:1	SIZE A4	X.XX±.006(0.15)	.XX'±1'	DRAWN BY LXF	DATE 19/MAY/17	THIS DRAWING CONTAINS INFORMATION THAT IS PROPRIETARY TO TXGA INDUSTRIAL ELECTRONICS(S.Z)CO.,LTD AND SHOULD NOT BE USED WITHOUT WRITTEN PERMISSION		
		X.XXX±.004(0.10)	.XXX'±0.5'					